

Setting up the Xda™ II as a modem (Microsoft® Windows® only)



You can use the Xda II as a modem with your computer to connect to the internet and access email or surf the web.

Setting up the modem (Microsoft® Windows® only)

The modem functionality on the Xda II is a software implementation of a normal GSM modem, and closely follows the specifications for modem function.

It is possible to use the modem with:

- A serial cable, using a 9/25 pin D-type serial connector
- The Infrared port
- The USB cradle or cable
- Bluetooth™*

Xda II is a class 10 GPRS device and supports a maximum of 4 timeslots in the downlink (up to 56kbps). This means it can be as fast as using a fixed-line. The wireless modem function does not fully support Microsoft Plug and Play except with the USB connection.

1. Modem layout

Start: start the wireless modem emulation function

Stop: stop the wireless modem and reset the Xda II

View log: User can see the AT command log file of the last connection session.

Connection: When the light is Yellow, a connection to the Internet has been made and the Xda II is in data mode

Receive Data: the light will flash green when the modem is receiving data

Send Data: the light will flash blue when the modem is sending data

2. Operation

Operation of the wireless module will switch off the phone function of the Xda II. While in use as a modem, the device will not be able to send or receive text messages, nor make or receive phone calls.

Contents:

- Windows 98/ME** p3-5
1. Set up the modem
 2. Set up the network connection
- Windows 2000/XP** p6-11
1. Setting up the modem
 2. Set up the network connection
 3. Using USB cable (or a USB cradle)



	Windows 98/SE/ME	Windows NT4	Windows 2000/XP
Serial	Y	Y	Y
Infrared	Y	N	N
USB	N	N	Y
Bluetooth	Y*	N	Y*

*Bluetooth support depends on the device and software being used.

Using Xda II as a modem

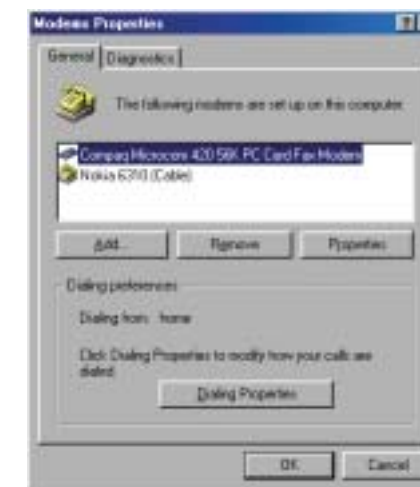
1. Setup the modem – Windows 98/ME

On your PC, open the **Control Panel**

Select **Modems**



Select **Add**

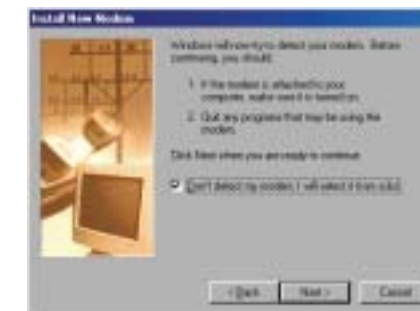


Select **Other**

Select **Next >**

Tick the box next to **Don't detect my modem; I will select it from a list**

Select **Next >**

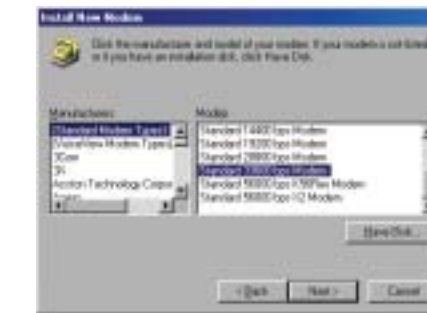


A list of device drivers available to the system will be created.

Select **(Standard Modem Types)**

Select **Standard 33600 bps Modem**

Select **Next >**



Select **Communications Port (COM1)**

for a serial connection or;

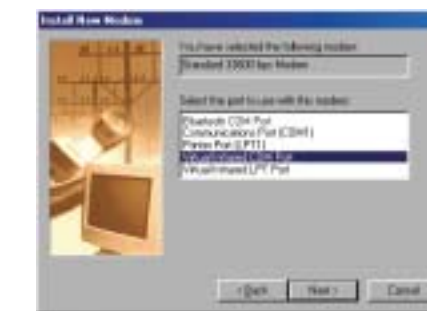
Select **Virtual Infrared COM Port** if

you are using the Infrared port or;

Select the Bluetooth COM Port of the

Bluetooth modem

Select **Next >**



Select **Finish**

Highlight the modem you have just

setup, and click on **Properties**



Confirm the Port: is correct

Confirm the Maximum speed is set at **115200**

Select the **Connection** tab



Click **Advanced**



Untick **Use flow control**

In the Extra settings field, enter the following:

AT+CGDCONT=1,"IP","MOBILE.O2.CO.UK"

GSM Users only:

Replace the above instruction with

AT+CBST=7,0,1 (ISDN – Quick connect) or

AT+CBST=71,0,1 (Analogue – Roaming)

Click **OK** twice

2. Set up the network connection

– Windows 98/ME

Select **Dial-Up Networking**



Double click on **Make New Connection**



Enter the name of the connection as:

O2 Mobile Web (via Xda II)

Select **Standard 33600 bps Modem**

Click on **Next >**



Enter the telephone number as ***99#**

Click on **Next >**



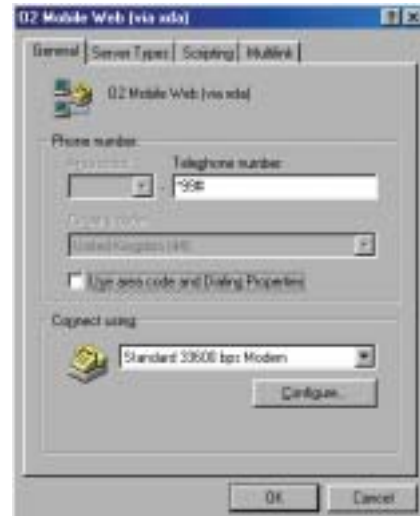
Click on **Finish**

On your newly created dial-up profile, right-click and select **Properties**



Untick **Use area code and Dialing Properties**

Click on the **Server Types** tab



Untick **NetBEUI**

Untick **IPX/SPX Compatible**

Click **TCP/IP Settings**



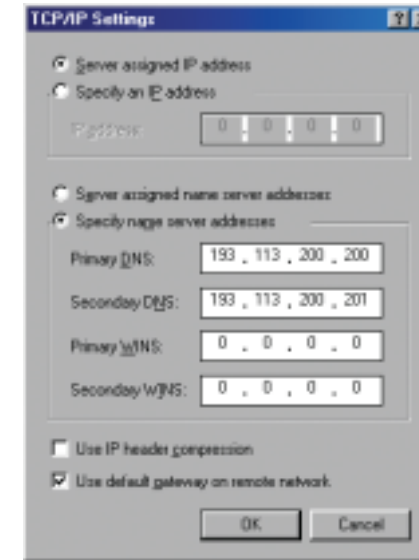
Untick **Use IP header compression**

Select **Specify name server addresses**

In the **Primary DNS** field enter 193.113.200.200

In the **Secondary DNS** field enter 193.113.200.201

Click **OK**



Connect your Xda II, activate the **Wireless Modem** and choose connection type.

Select **Dial up Networking** and double click on **O2 Mobile Web (via Xda II)**



In the **User name** field enter **O2WEB**.

In the **Password** field enter **password**

Click on **Connect**



The connection will be made.



1. Setup the modem – Windows 2000/XP

If you have a USB port, you should read the instructions on p12-13.

Open the **Control Panel**

Select **Phone and Modem Options**

Select the **Modems** tab

Select **Add...**



Tick the box **Don't detect my modem; I will select it from a list.**

Select **Next >**



Select **(Standard Modem Types)**

Select **Standard 33600 bps Modem**

Select **Next >**



Select the correct com port for your connection;
in this case we are using COM1 for a serial cable connection

Select **Next >**



Select **Finish**



Select **Properties**



Confirm the **Maximum Port Speed** is set to 115200

Select the **Advanced** tab



In the **Extra initialization commands:** field enter:

AT+CGDCONT=1,\"IP\", \"MOBILE.O2.CO.UK\"

GSM Users only:

Replace the above instruction with **AT+CBST=7,0,1** (ISDN – Quick connect) or

AT+CBST=71,0,1 (Analogue – Roaming)

Select **Change Default Preferences...**



Change the **Flow control:** field to read None

Click **OK** twice



Notes!

For Windows 2000 and XP systems O2 strongly recommends the use of a serial cable, available at <http://www.o2.co.uk/xda>. To use the infrared port with these Operating Systems, a patch needs to be applied to configure a permanent virtual COM port (eg COM5). A freeware patch called IrCOMM2K is available at <http://www.ircomm2k.de> (this is 3rd party software not supported by O2).



2. Setup the network connection

– Windows 2000/XP

Select **Network and Dial-Up connections**

Windows XP users should select **Connect To: Show All Connections**

Double-click the Make New Connections application

Click **Next >**



Select the radio button for **Dial-up to the Internet**

Click **Next >**



Select the 3rd radio button; **I want to set up my Internet connection manually**

Click **Next >**



Select **I connect through a phone line and a modem**

Click **Next >**



Confirm that the modem is set at **Standard 33600 bps Modem**

Click **Next >**



Untick the field **Use area code and dialing rules**

Enter ***99#** as the telephone number

Click **Advanced**



Select the **Addresses** tab

In the DNS server address, select **Always use the following:**

In the **Primary DNS server:** field, enter **193.113.200.200**

In the **Alternate DNS server:** field enter **193.113.200.201**

Click **OK**

Click **Next >**



In the **User name:** field enter **O2Web**

In the **Password:** field enter **password**

Click **Next >**



Change the Connection Name to **O2 Mobile Web (via Xda II)**

Click **Next >**



Untick the field **To connect to the Internet immediately**

Click **Finish**



Right-click on the dial-up connection just created, and select **Properties**



Select the **Networking** tab

Select **Properties**



Select **Advanced**



Untick **Use IP Header compression**

Click **OK** 3 times. You are now ready to connect.



Connect your Xda II, activate the **Wireless Modem** and choose the connection type.

Double click on O2 Mobile Web (via Xda II) profile

Click on **Dial**. You will now connect to the Internet



3. Using USB cable (or a USB cradle)

– Windows 2000/XP

To use the USB connection as a modem, you will need to change your Microsoft Activesync settings.

Open **Activesync**, select **File** and **Connection Settings**.

Untick **Allow USB connection with this desktop computer**. It is not possible to use the USB port with Microsoft Activesync and the Wireless Modem application.



Attach your cable to Xda II or put Xda II in it's cradle (please ensure the cradle is connected to your computer).

Choose **USB** from the Connection Type dropdown box

Select **Start**



This will activate the Microsoft Plug 'n' Play routine, and automatically configure your computer to use Xda II as a modem.

Select **Install from a list or specific location (Advanced)**

Select **Next >**



Select **Don't search. I will choose the driver to install.**

Select **Next >**



Scroll down the list and select **Modems**

Select **Next >**



Select **Have Disk...**



Insert the Xda II CD into your CD-ROM drive. Select your CD-ROM from the menu – in this example we are using **D:**. Choose the folder **OEM\Drivers**

Select **OK**



Select **HTC USB Modem**

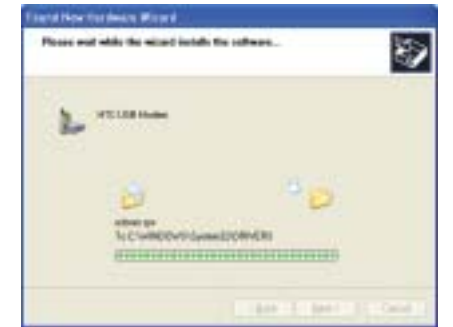
Select **Next >**



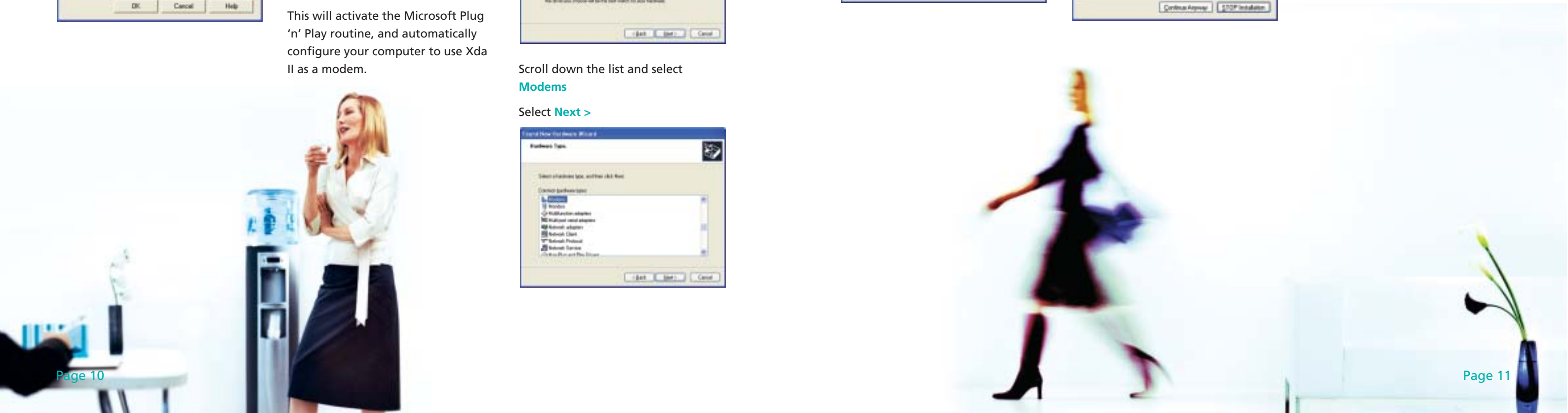
Windows XP users will be presented with this warning. Select **Continue Anyway**



This will configure the modem for use with your system.



Select **Finish**



Disconnecting the Wireless Modem

To close your Mobile Web connection, click on the Disconnect button on your laptop. The Xda II wireless modem will need to be manually stopped.

Press the Stop button on Xda II to cancel the connection.

Pressing the Stop button will reset the phone module of Xda II, and it will reconnect to the O2 network. Text messages and Phone messages will now be available to you.



260 Bath Road www.o2.co.uk
Slough Berkshire SL1 4DX
United Kingdom

O2 (UK) Limited Registered Office as above Registered in England no. 1743099